

TT-53 PRODUCT SELECTION GUIDE



TT53 print unit – art. 820104 **Power Supply TT/TD – art. 820425**

- 030561 TT-53 Standard Black 1.800 mtr.
- 030587 TT-53 Premium Black 1.800 mtr.
- 030599 TT-53 Excellence Black 1.800 mtr.
- 030784 TT-53 Paper Black 1.500 mtr.



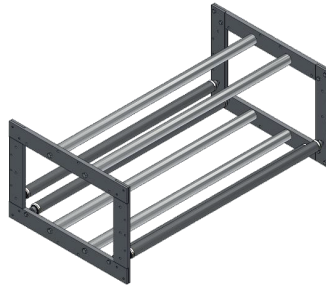
Network cable RJ45 M12D
* 5 mtr – art. 170841
* 10 mtr – art. 171468

Note: This cable allows the end-user to connect the printer to the network or our *Printerface IoT controller*. One of both is needed to control the TT-printer.



I/O cable TT/TD (5 mtr)
art. 170867

Note: One will need this cable to connect the printer signals to a host machine. Signals such as *Print trigger* or *Error*.



I&C Universal TT - series bracket
art. 820257

Note: Including 4 foil guide rollers

Custom brackets: available on request



Printerface IoT controller



Printerface IoT with wallmount bracket
art. 820552



Printerface IoT with standing bracket
art. 820342

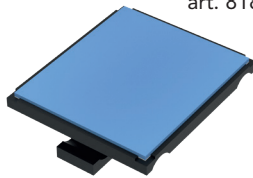
OR

Note: The Printerface is needed to operate the TT-printers. However, the end-user can also use its own (Windows based) device to operate the printer. In this case, one can download the necessary software from www.kortho.com.

INTERMITTENT



Intermittent assembly
art. 818997



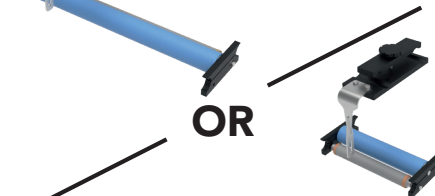
Note: This set contains:
1. Counter pressure plate with mount.
2. Printer mount.

CONTINUOUS



Continuous 600mm assembly
art. 820368

OR



Continuous 250mm assembly
art. 820355

Note: A set contains:
1. Counter pressure roller with mount.
2. Printer mount.
3. Encoder mount.



Encoder
art. 821252



Foil adjuster / substrate buffer
art. 819009



Foil adjuster / substrate buffer
art. 819009



!!! FREE !!!

Note: The software to control your printer with.

Additional

Set with pipe cutter and deburrer.
art. 819012

Note: useful when tailoring the universal bracket (820257)

Inline ethernet coupler (2x RJ45)
art. 170879

Note: If the situation requires a longer network cable you can use this device to interconnect an RJ45 ethernet with our network cable

16 port Industrial Fast Ethernet Switch
art. 170854

